



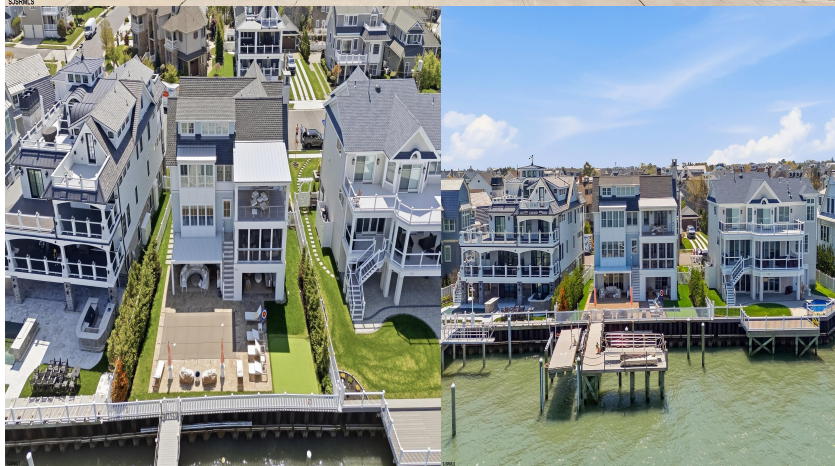
Priced at

\$11,999,000

About the Property

Introducing one of the most extraordinary bayfront estates ever offered in Ocean City, privately positioned on one of the island's most prestigious and exclusive streets with breathtaking panoramic views stretching across the Great Egg Harbor Bay. Expertly crafted in 2022 by renowned luxury builder D.L. Miner Construction, masterfully designed by celebrated architect Asher Slaunwhite, and beautifully curated by Stephanie Kraus Designs, this generational waterfront masterpiece represents the pinnacle of coastal luxury living. Every detail of this exceptional residence was thoughtfully designed to maximize what are arguably the finest sunset and open bay views on the island, while seamlessly blending elegant indoor living with spectacular outdoor entertaining spaces. Featuring 5 bedrooms,

...



Features

- 4 Bathroom
- 5 Bedroom
- Boat Slip
- Cabana
- Curbs
- Deck
- Fenced Yard
- Outside Shower
- Patio
- Pool-In Ground
- Porch Enclosed
- Sprinkler System

Give me a call!

www.monihan.com