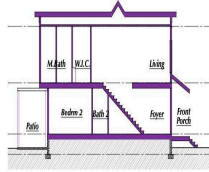




EAST UNITS



SECTION @ FOYER

Priced at
\$849,000

About the Property

Potential Incentives: Get a 2% rate reduction for the first two years (from today's rate of 7%) with our seller paid buydown program! At completion of buydown period, your interest rate will adjust to 7% (using the above example of today's 7% rate). This is subject to lender approval and buyer qualification. Example: Year 1-5%, Year-2 6% Year-3 7% Sellers may have the ability to include an "55 AGE RESTRICTED" building consisting of units 31-36 to qualify for a possible 5-year tax abatement. Welcome to the Residences at Patcong Creek! Where Luxury Meets Tranquility in the Heart of Linwood, NJ. Unmatched Location nestled in the quaint town of Linwood, NJ, The Townhomes offer unparalleled access to both natural beauty and urban convenience. Just minutes away from the vibrant coastal commun ...



EAST-FRONT ELEV



EAST-RIGHT ELEV



EAST-REAR ELEV



EAST-LEFT ELEV



Features

- 2 Bathroom
- Curbs
- Patio
- Porch
- Sprinkler System
- Dining Area
- 4 Bedroom
- Deck
- Paved Road
- Sidewalks
- Breakfast Nook
- Eat In Kitchen

Give me a call!

www.monihan.com