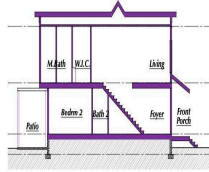




EAST UNITS



SECTION @ FOYER

*Priced at*  
**\$849,000**

## About the Property

Coastal Luxury Living Awaits... At CreekView Linwood, life slows to the rhythm of the tides—where mornings shimmer with sunlight on the bay and evenings whisper with soft winds and birdsong. Just five waterfront townhomes remain, each a serene jewel nestled between nature and the shore. Waterview homes from \$989,000 Garden-view homes from \$849,000 3-4 bedrooms · 4 baths · Everyday elegance Inside, you'll find curated comfort: Wolf cabinetry, quartz countertops, Samsung stainless appliances, a glowing electric fireplace, and warm CoreTec flooring throughout. With special financing for qualified buyers, this isn't just a residence— it's the lifestyle you've been dreaming of.



EAST-FRONT ELEV



EAST-RIGHT ELEV



EAST-REAR ELEV



EAST-LEFT ELEV



## Features

- 2 Bathroom
- Curbs
- Patio
- Porch
- Sprinkler System
- Dining Area
- 4 Bedroom
- Deck
- Paved Road
- Sidewalks
- Breakfast Nook
- Eat In Kitchen

**Give me a call!**

[www.monihan.com](http://www.monihan.com)