

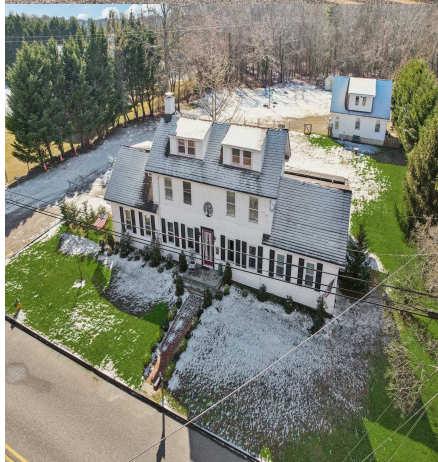


Priced at

\$967,500

About the Property

There s something about a home near the shore that changes the pace of life. At 668 Crawford Road, mornings begin a little slower. Maybe it s the way the southern exposure allows sunlight to stretch across the entire 1.5-acre property, filling the living room, dining room, and kitchen throughout the day. Or how that same light carries out back, keeping the deck and yard warm and inviting from morning through evening. Paired with the breeze drifting in from the nearby Delaware Bay, it s the kind of setting where coffee tastes better and plans for the day feel wide open. That might mean heading just a few miles down the road to the beaches and charm of Cape May, or staying right where you are, surrounded by space, privacy, and possibility. This home has worn many hats over its history ...



Features

- 2 Bathroom
- Deck
- Living Room
- Recreation/Family
- Dining Area
- Smoke/Fire Detector
- 5 Bedroom
- Outside Shower
- Dining Room
- Eat-In-Kitchen
- 1st Floor Primary Bedroom
- Stove Natural Gas

Give me a call!

www.monihan.com