



Priced at
\$1,599,999



THOMAS/BECHTOLD
ARCHITECTURE & ENGINEERING
GWTHOMAS.NET (609) 927.5050

209 39th Street
Sea Isle City, NJ

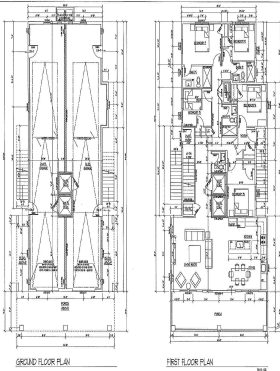
About the Property

Welcome to 209 39th Street...your perfect family getaway at the shore! This new construction offers 5 spacious bedrooms and 3.5 baths, giving everyone plenty of room to relax and enjoy. With an impressive 35-foot-wide layout, this home provides an open, airy feel you won't find in the typical townhouse in Sea Isle. Located right in the heart of downtown, you'll be steps away from all the best that Sea Isle has to offer restaurants, shopping, the promenade, and of course, the beautiful beaches. It is early enough to pick your own finishes. Please see ask for builders spec sheet for the many upgrades included in this new build. Highlights 5 Bedrooms 3.5 Bathrooms, Wide 35-foot layout rare for the area, Sound Proof Windows Sliders, Elevator option available, 2X6 Walls, 4 car ...

Organ Duplex
209 39th Street



Working Drawings
August 27, 2025



Features

- 3 Bathroom
- Living Room
- Kitchen
- Eat In Kitchen
- Laundry/Utility Room
- 1st Floor Master Bedroom
- 5 Bedroom
- Dining Room
- Recreation/Family
- Dining Area
- Great Room
- Range

Give me a call!

www.monihan.com